

1301 North  
Walton Boulevard

Crystal Bridges Museum  
of American Art

Scott Family Amazeum

Downtown  
Bentonville, AR

Walmart Supercenter

Walmart  
Home Office



NorthWest  
Arkansas  
Community  
College

Bentonville  
Municipal  
Airport

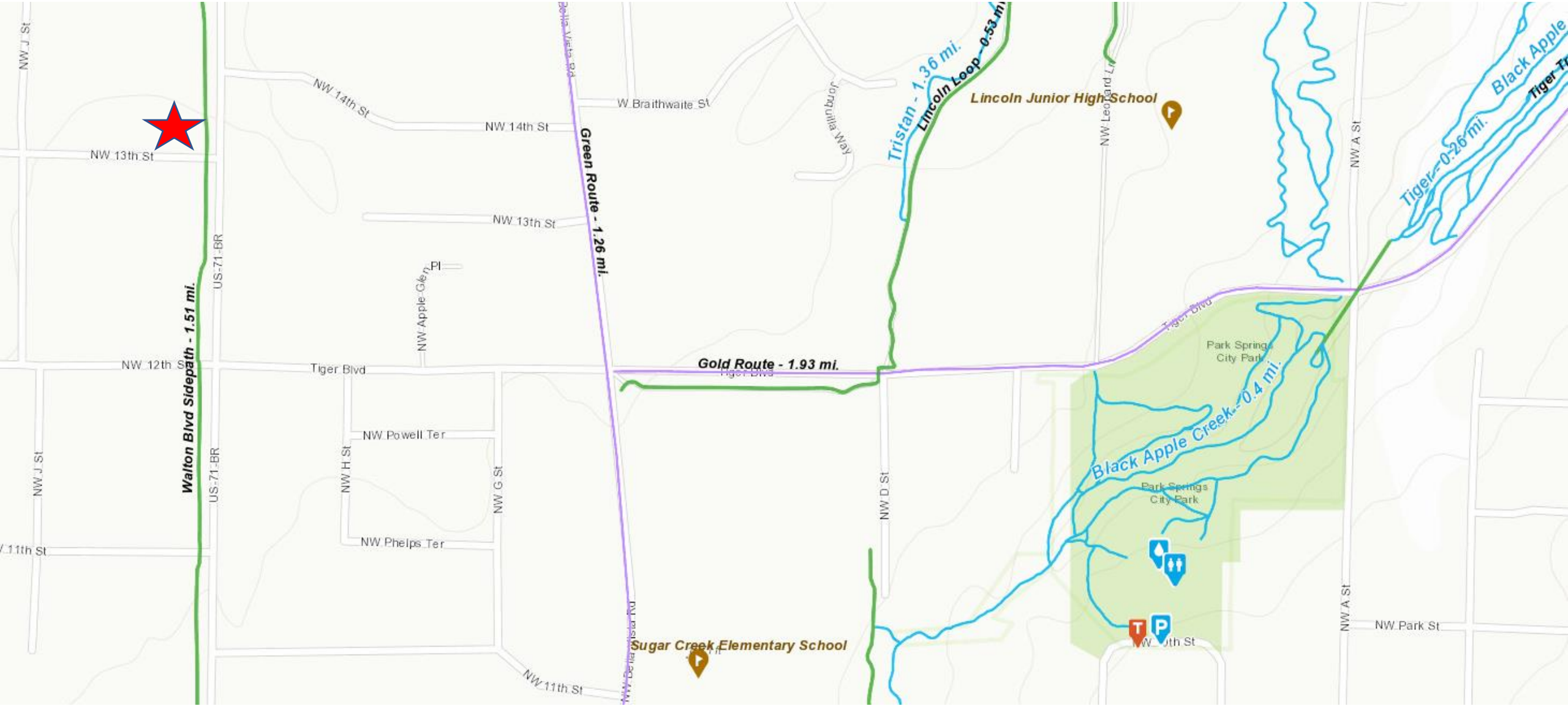
Bentonville High School

Sam's Club

Bentonville Motor  
Vehicle Office

First Security Bank

Links at Bentonville



Walton Blvd Sidepath - 1.51 mi.

Green Route - 1.26 mi.

Gold Route - 1.93 mi.

Tristan - 1.36 mi.

Lincoln Loop - 0.53 mi.

Black Apple Creek - 0.4 mi.

Tiger - 0.26 mi.

Black Apple  
Tiger Tr

Lincoln Junior High School

Sugar Creek Elementary School

Park Springs City Park

Park Springs City Park

NW Park St





**DISCOUNT TIRE**

**Mercy+**

**1301** ★

19,000 vpd

N Walton Blvd

Walmart Fuel Station

Walmart Neighborhood Market

**Walmart**  
Neighborhood Market

1400 N Walton Blvd Parking

Aspire Gymnastics Academy

Bentonville Fire Department Station 3

Zary's Acropolis Takeout

**HARPS**  
HOMETOWN FRESH

Pat's Bakery & Express Coffee Takeout

Habitat For Humanity ReStore

A-1 Realty

Arby's

**Arby's**

Bethany Blair Photography

NW 12th St

NW 12th St

Tiger Blvd

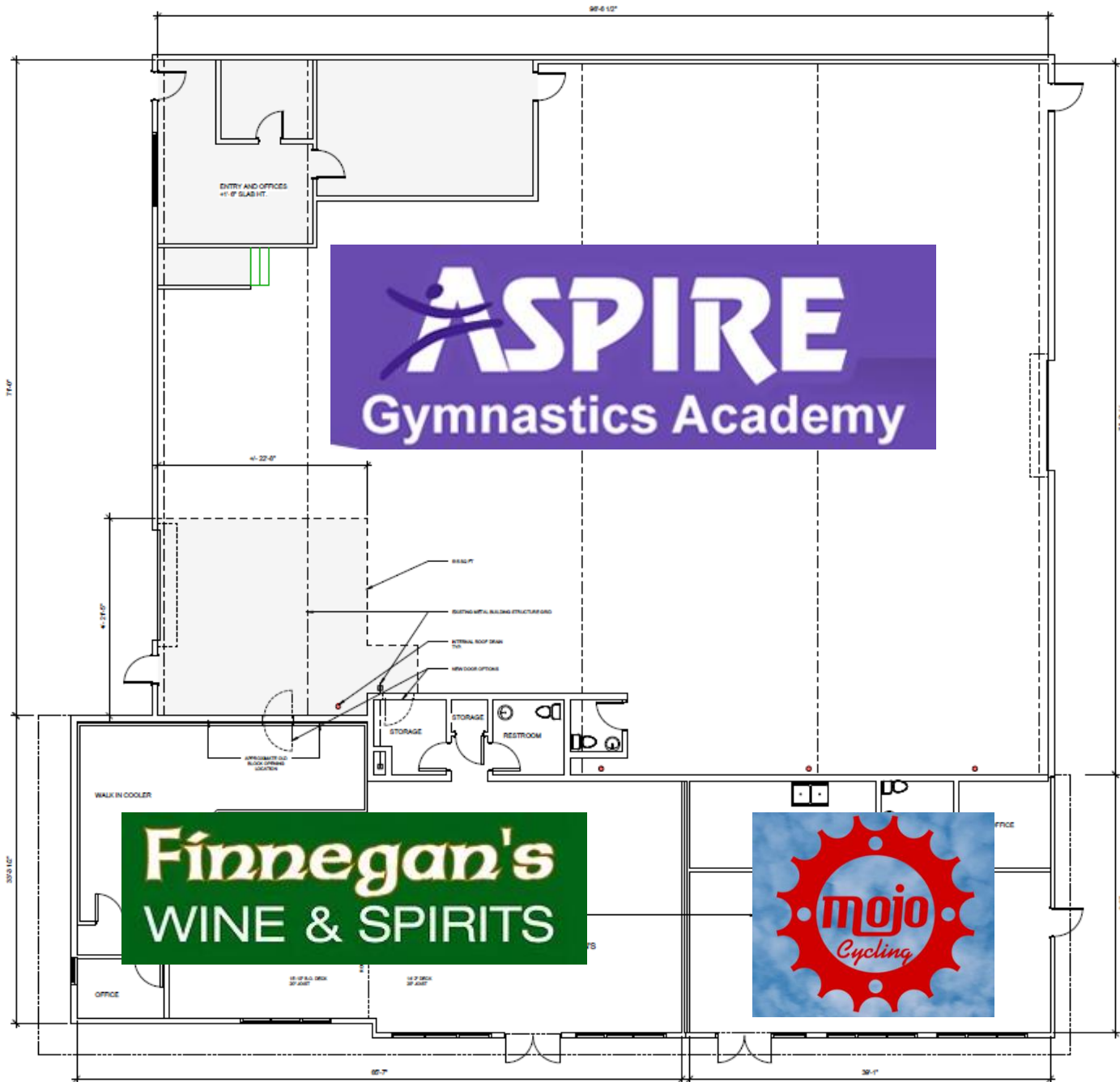
Tiger Blvd

WINE • BEER • SPIRITS

FINNEGAN'S

Available  
For Lease





AREA SCHEDULE	
Name	Area
ASPIRE	787 SF
FINNEGAN'S	222 SF
CONVENIENCE STORE	108 SF
	1067 SF

**NIELSEN**  
ARCHITECTURE, LLC  
nielsenarchitecture.com  
1700 SW Commerce Drive  
Suite 20  
Beverly Hills, AL 35213  
info@nielsenarchitecture.com  
479.254.0112

FOR REFERENCE  
AND REVIEW ONLY  
NOT FOR  
CONSTRUCTION

PERTAINING TO ISSUES OF  
CONFIDENTIALITY AND COPYRIGHT,  
REQUEST FOR THE RELEASE OF  
INFORMATION OR DISCLOSURE OF  
INFORMATION MUST BE APPROVED BY  
NIELSEN ARCHITECTURE, LLC.

**FINNEGANS**

PROJECT NUMBER: 05-101-0000K  
DRAWN BY: Author  
APPROVED BY: Approve  
ISSUE DATE: 10/02/08

REVISIONS	DATE	DESCRIPTION

SHEET CONTENTS:

FIRST FLOOR PLAN

1 FIRST FLOOR PLAN - EXISTING  
3/8" = 1'-0"



WINE BEER SPIRITS

FINNEGAN'S



IT'LL DO BREW  
EST. 2021

DRIVE THRU

WOW  
CAMO TRAILERS

672594

Razorback Greenway



100.51 in

84 in

**FINNEGAN'S**  
\* WINE \*  
BEER & SPIRITS

24 in

**SPACE  
FOR LEASE  
479-372-4052**

67 in

**ASPIRE**  
Gymnastics Academy

29.5 in

30 ft

84.6 in



MERCY HEALTH NORTHWEST  
ARKANSAS COMMUNITIES  
1401 N WALTON BLVD  
BENTONVILLE, AR 72712  
APN: 01-02409-000  
ZONING: C-2

STRIKE 3 LLC  
906 NW 13TH ST  
BENTONVILLE, AR 72712  
APN: 01-02399-000  
ZONING: C-2

EXISTING 1-STORY  
MASONRY/METAL BUILDING  
10,704 SQ FT ±  
HEIGHT: 16.7' ±

Food Truck Pad  
For Lease  
\*Electric & Water Available

N. WALTON BOULEVARD - HWY 71  
50' PUBLIC R/W (PLAT BK 2007 PG 652)  
ASPHALT SURFACE

NW 13TH STREET  
50' PUBLIC R/W (PLAT BK 2007 PG 652)  
ASPHALT SURFACE

