



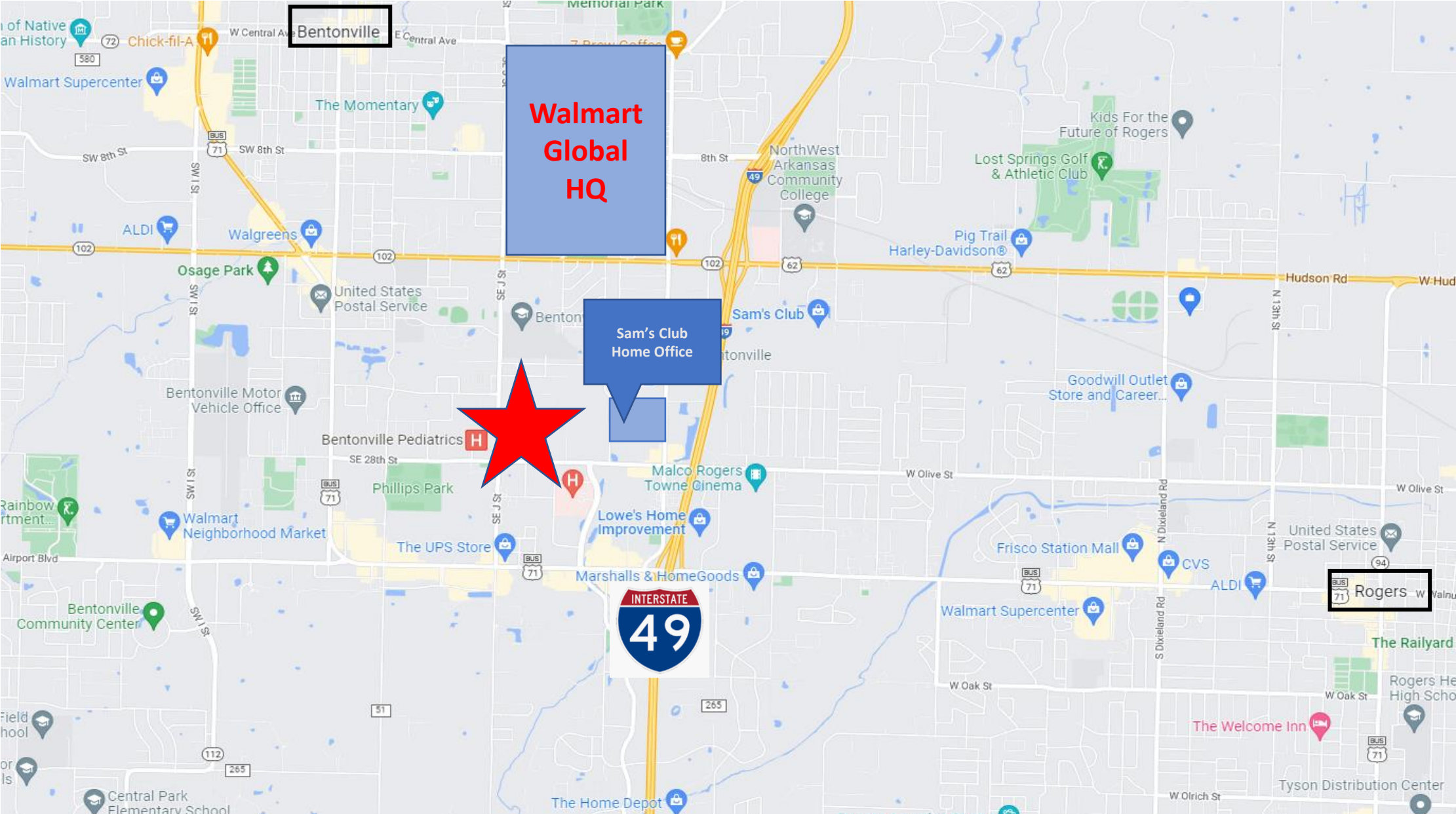
- Abundant Parking
- Strategic Location
- Convenient Access
- \$24.50 NN



CLASS A OFFICE NOW AVAILABLE

2701 SE J Street, Bentonville, Arkansas

2701 SE J St., Bentonville, AR



**Walmart
Headquarters
1 Mile**



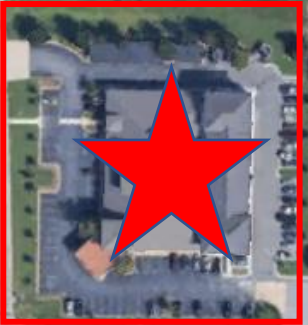
HAAS HALL ACADEMY
EVERY SCHOLAR, EVERY DAY - COLLEGE BOUND!

16,000 VPD

J STREET GYM

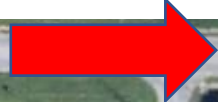
hp **JAIPUR HOME**

SE J Street



ZEBRA

**Sam's Club
Headquarters
.8 Miles**



SE 28th Street

15,000 VPD

Casey's





Covered Parking

Covered Parking

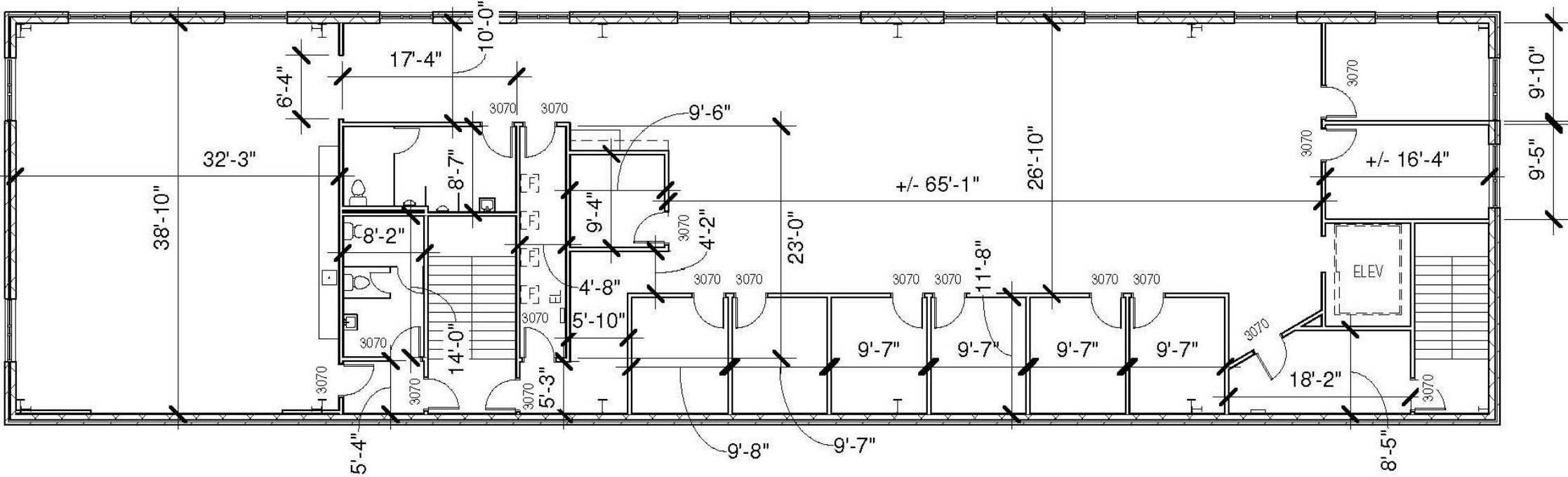
SE J Street

SE 28th Street



Second Floor

5,694 sf



3

SECOND FLOOR PLAN

1/16" = 1'-0"